

the **HYDRO-BLOK**[®] ADVANTAGE

- Lightweight & extremely strong
- Ready to water test and install tile after one hour
- Foam components can be easily customized with simple tools
- Pre-Built niches and benches
- Building board for custom features

HYDRO-BLOK[®] lets you build a 100% waterproof shower system **EASIER & FASTER** than traditional install methods



Demos and complete instructions at www.YouTube.com/HYDROBLOK



HYDRO-BLOK[®]
The BETTER Shower System

Traditional System*

Sheet Membrane System*

Install Pre-Formed Pan	1	0	1
Install Wallboard <small>(wait 24hrs)</small>	2	2	2
Apply Mortar Pre-slope <small>(wait 24hrs)</small>	0	1	0
Install Linear Final Slope	0	3	0
Apply Sheet or Liquid Membrane 1st Coat <small>(wait 12hrs)</small>	0	1	1
Install Banding or Seaming w. Thinset & Mesh	0	1	1
Install Corner Patches	0	0	1
Apply 2nd coat Liquid Membrane <small>(wait 24hrs)</small>	0	1	0
Total Installation Hours	3 HOURS	9 HOURS	6 HOURS
Water Testing	IMMEDIATELY	24 HOURS	24 HOURS
Set Time	1 HOUR	48 HOURS	24 HOURS

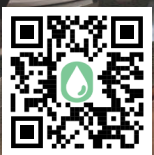
SAVE TIME & MONEY

*Above time frames based on a typical 3'x 5' shower with 8' tall walls. No job site modifications needed. May not represent all situations



HYDRO-BLOK
HBCD
FREE
FOAM

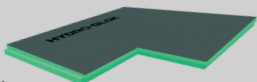
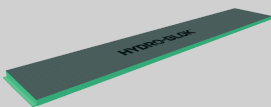
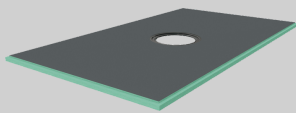
HYDRO-BLOK
LIFETIME
WARRANTY



www.hydroblok.com
425-286-6840

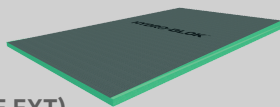
Low-Profile Shower Pans & Extensions (drain included)

- 36"x36"
- 36"x48"
- 36"x60"
- 36"x72"
- 48"x48"
- 48"x60"
- 48"x72"
- 48"x84"
- 60"x60"
- 60"x72"
- 60"x84"
- 72"x72"
- 12"x72" (EXT)
- 24"x48" (EXT)
- 36"x36" (CONER EXT)
- 10"x72" (RAMP)



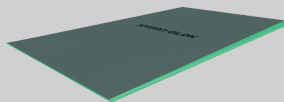
Single Slope Shower Pans (use with linear drain)

- 36"x60"
- 48"x72"
- 60"x36"
- 72"x48"
- 18"x72" (SIDE EXT)
- 72"x12" (PAN EXT)



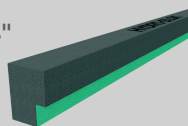
THIN Single Slope Shower Pans (use with linear drain)

- 36"x60"
- 48"x72"
- 60"x36"
- 72"x48"
- 72"x12" (PAN EXT)



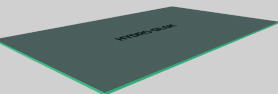
Shower Curbs

- Standard 60"x3 1/2"x4"
- Standard 84"x3 1/2"x4"
- MINI 60"x2"x2 1/2"
- MINI 84"x2"x2 1/2"



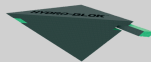
Wallboard & Building Board

- 36"x60"x1/4"
- 36"x60"x1/2"
- 48"x64"x1/2"
- 36"x60"x5/8"
- 36"x60"x1"
- 36"x48"x1 1/2"
- 48"x60"x2"



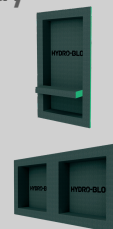
Shower Benches

- Diamond Medium 17"x17"
- Diamond Large 22"x22"
- Suspended Medium 17"x17"
- Suspended Large 22"x22"







Niches & Shower Caddy

- 16"x16" Niche
- 16"x28" Niche
- 16"x22" Barrel Head Niche
- 32"x16" Double Wide Niche
- 32"x26" Double Arch Niche
- 8"x8" Shampoo Caddy

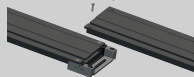


Supplies Tools & Accessories

- 10oz. Joint Sealant
- 20oz. Joint Sealant
- Cartridge Gun 
- Sausage Gun (w/3 tips)
- Sausage Gun Replacement Tip
- Screws & Washer 100pk
- Screws 1,000pk
- Washers with Tabs 1,000pk
- Corner Putty Knife 
- Standard Putty Knife
- LP Drain Kit Replacement
- LP Drain Frame Kit Replacement
- LP Drain Cover (Matte Black, Bronze, Polished Chrome, Satin Brass)
- Pipe Seal 
- Valve Seal 
- Sealant Cleansing Wipes

Linear Drain & Accessories

- 73 1/2" Line Drain Kit
- Floor Lowering Joist Clip Kit
- Drain Body Coupler
- Slot Extender Stick
- IN-Shadow Trim
- 3/8" IN-Sight Trim



- 1/4" IN-Sight Trim
- 1/2" IN-Sight Trim
- 1/4" Access Tray & Trim
- 1/2" Access Tray & Trim
- 3/8" Access Tray & Trim (comes with line drain)



All You Need for a 3'x5' Shower (with 6" walls)

- 1- 36"x60" Shower Pan (Drain & Tools Included)
- 1- 60" Long Curb
- 5- 36"x60"x1/2" Wallboard
- 8- 10oz Sealant
- 1- 100pk Screws & Washers



www.hydroblok.com
425-286-6840